

es

Study English
in
Dubai

www.esdubai.com





Dubai

General information



es



Dubai estimated population

3,137,000

About 95% of Dubai residents are expats



6th

**RICHEST COUNTRY
IN THE WORLD
GDP (PPP) 65.149**



**World's longest
driverless metro
network**

more than 500,000
passengers daily



828

meters

of the world's
tallest building

202



nationalities

in the UAE's labour market



**11 million
visitors**

per year

200 islands



in the UAE

It is virtually
zero crime
across the city

0%



es

Dubai general information



Language

Although Arabic is the official language in the UAE, visitors to Dubai will find that English is the most widely spoken language for business, education, trade and tourism.



Religion

Although an Islamic country, the UAE respects other religions and followers are allowed to practice their beliefs. There are Hindu temples and Catholic, Anglican and Protestant churches in Dubai.



Clothing

Lightweight summer clothing is ideal with a wrap, sweater or jacket for cooler winter nights and air-conditioned premises. Although the dress code in the UAE is generally casual, people dress formally in the evening.

es

Dubai general information



Transport

Public transport in Dubai is divided into land transport, which comprises buses, metro, taxis and a tram system, as well as marine transport, which includes water taxis, waterbuses, and a ferry.



Climate

Dubai enjoys an arid subtropical climate, with blue skies and sunshine all year round. Temperatures range from lows of 10°C to extreme summer highs of 48°C.



Safety

Dubai is within the top 12 safest cities in the world for expatriates. This is reflected in its very low crime index and high standard of living. Students should be respectful of the law as the nation has a zero-tolerance policy towards illegal substance use.

es



6 Reasons to choose Dubai



Easy visa process

Student visas are processed directly by the school in the UAE. The refusal rate is 1%!.



Safety

Dubai is in the top 10 safest cities in the world, has a very low crime index, and high standard of living.



Cosmopolitan atmosphere

With an expat population of over 85%, Dubai is one of the most dynamic and cosmopolitan cities in the world.



Working opportunities

Students are allowed to work part-time during their studies and can also switch to full-time employment after they complete their course.



Great winter weather

In Dubai, you can enjoy blue skies, warm seas, and sunshine all year round.



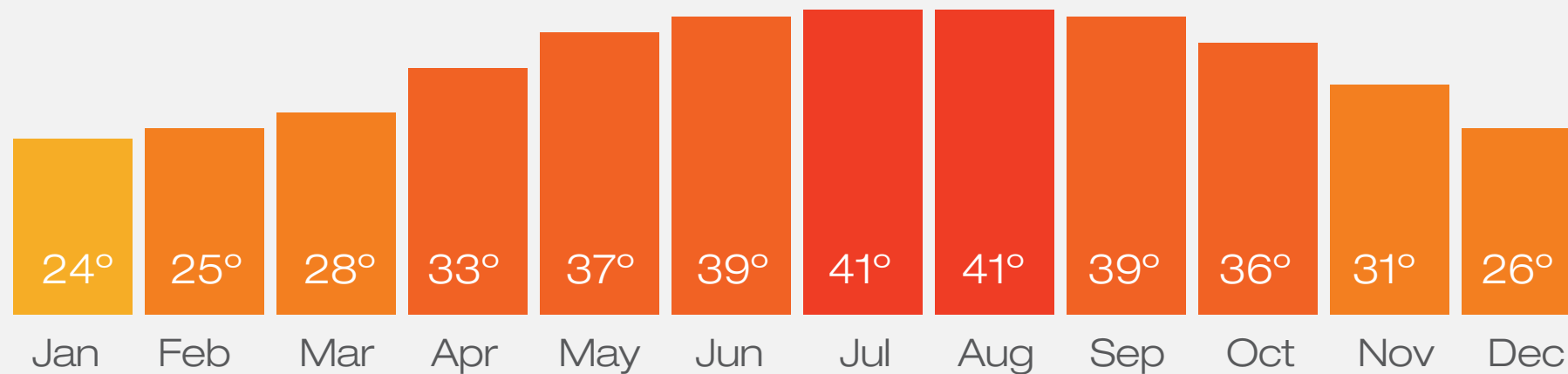
English - speaking environment

English is the most widely spoken language for business, education and trade in Dubai.



Dubai weather

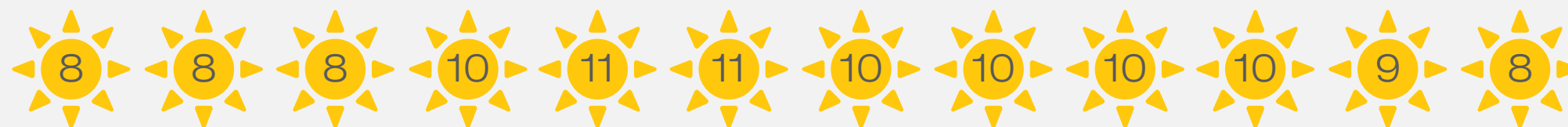
Average season temperatures °C



Average monthly rainfall (mm)



Average daily sunshine (hours)



The logo consists of the letters 'es' in a white, lowercase, sans-serif font. The 'e' is slightly larger and more prominent than the 's'. The logo is positioned in the top left corner of the slide, partially overlapping a red diagonal shape.

Dubai cost of living

Cost of living
in **LONDON** is **23%**
HIGHER than in DUBAI

Cost of living
in **NEW YORK** is **29%**
HIGHER than in DUBAI

Cost of living
in **SIDNEY** is **6%**
HIGHER than in DUBAI

Cost of living
in **DUBLIN** is **8%**
HIGHER than in DUBAI

Universities in Dubai





Dubai attractions



es



**The fastest police
car in service**
with a top-speed
of 407 km/h



The Dubai Mall
world's largest
shopping mall more
than 750.000 visitors
every week



**The biggest
picture frame**
with a soaring
height of 150
meters



Burj Khalifa
828 meters
of the world's
tallest building



7 ★ ★ ★ ★
★ ★ ★
Burj Al Arab
one of the best
seven-star
hotels in the
world

es

Burj Al Arab

Dubai Mall

Burj Khalifa

es

TIME FOR DUBAI

Our
school



Why choose *Us?*

At ES Dubai we understand that there are many reasons why people choose to study English and we will provide you with a stimulating environment that will help you achieve your goals. ES Dubai offers you:



Outstanding
academic
quality



Qualified,
native
teachers



Students
from all over
the world



State of the
art facilities



65 +

nationalities
at school

We don't say it, our students do!

We carry out regular teacher evaluations and our students consistently rate their courses and teachers 4.8 and above.



4.8

★★★★★

Average Facebook rating (4.8)



4.9

★★★★★

Average Google rating (4.9)



ES Dubai



Location:

Our school is located in Jumeirah Lake Towers (JLT), which is in the heart of New Dubai. JLT is conveniently situated and offers a great variety of food, retail and entertainment options, great access to public transport (two metro stations), and is just minutes away from the Dubai Marina Mall and the beach.



es

Students from over 65 nationalities



Algeria
Armenia
Brazil
China
Colombia
Ecuador
France
Hungary
Iran
Italy
Kazakhstan
Korea
Libya
Mexico
Mongolia
Morocco
Peru
Romania
Russia
Saudi Arabia
Senegal
South Korea
Spain
Switzerland
Turkey
Ukraine
Vietnam
Yemen

es

Teaching Style

At ES, we focus on the objectives, needs and aims of our students to plan their studies. Our approach to teaching English is 'Learner Centric', and our learners are encouraged to participate actively in class and to make suggestions about topics of interest to them. We aim to promote learner independence and to take into account their feedback when planning our lessons.

All our teachers plan exciting, interactive lessons so that students are motivated to learn, and our courses are interesting, relevant and enjoyable.



Our teachers

Qualifications

All our teachers are qualified, native English speakers, with many years of experience teaching English as a foreign language. We also have a high ratio of Diploma and Masters trained teachers at our school.

Some of our teachers



Mr Tom Hudd

British, Cross Cultural Competence and CELTA qualified English Teacher.



Ms Nicky Advani

American, CELTA qualified English Teacher with over 18 years' experience.



Mr Gene Weir

CELTA qualified teacher from Ireland, with over 12 years' teaching experience.



Ms Ivana Harris

TEFL qualified teacher from London, England, with over 5 years teaching experience in both the UK and the UAE.



Mr Simon Katz

CELTA and TEFL qualified teacher from New Zealand, with teaching experience in New Zealand.



Ms Katie Bokan

American TEFL qualified teacher, with over 6 years of experience teaching English around the world.



Mr Scott McGowan

PGDE and TEFL teacher from Scotland with experience teaching in UK colleges.



Ms Jasmine Navarro

CELTA and DELTA qualified English teacher from the UK, with 12 years' experience at the British Council.




Mr Mac Ghellai

CELTA qualified American teacher from Boston, with experience in the USA and UAE.

es



- b  Watch the video and answer the questions.
- 1 What does the science of happiness say about
 - 2 What have labour-saving devices failed to do?
 - 3 What does technology push out of our lives?
 - 4 What are the three ingredients of happiness?

3 Watch the video a
(both answers may

- 1 Technology prom
new possibilities
- 2 In a technologic
free time / fun.
- 3 Compared to 50

Courses offered

- General English
- IELTS Preparation
- Speaking Class
- Pronunciation Class

es

Class
technology

es



Modern
facilities

es

dream
INSPIRE
take chances
CREATE
imagine

Common
areas



es

International
environment

es



Placement & assessment



Student progress

ES Dubai measures its students' progress in the following ways!

Progress tests

(Minimum pass rate - 80%)

This progress tests are used to monitor the progress and is comprised of language focus, functional language, vocabulary and pronunciation based on bi-weekly units. The students' test results are recorded and appropriate feedback is provided to the student.

Mid-term test

(Minimum pass rate - 80%)

Mid-term tests are used to determine the students' mid-way course progress. It is a paper test comprised of grammar focus, functional language, vocabulary, pronunciation, reading, and writing based on the first half of the course book's content. Our instructors record results and provide individual student reports before the end of the test week, to be given to students, stakeholders, agents and/or parents.

End of course exam

(Minimum pass rate - 80%)

The End of Course exam is used to determine if the student has mastered the skills and fluency of their current level. It guides the instructor's decision as to whether the student is ready to progress to the next level. The paper test is comprised of grammar focus, functional language, vocabulary, pronunciation, reading, and writing based on course book's entire content. An individual student report is completed and feedback provided to advise the students on their

Speaking assessments & monitoring

Weekly monitoring and assessment of our students speaking ensures their aptitude in the general English-speaking world. Our individual student reports provide an assessment overview of the students' pronunciation, range of grammar and vocabulary, and their overall fluency for their level. Students cannot progress to the following level without successfully adhering to these essential criteria.

Individual student reports (ISR)

ISRs provide individual feedback to the students mid-course and at the end of their level. They indicate whether the student is ready to move up or not, also providing information about the student's test results throughout the entire course, as well as feedback on their level of speaking, attitude to learning, attendance, and class participation. The ISRs allow the instructor to best advise the students' progress.



Student progression

At ES Dubai we use the Common European Framework of Reference for Languages (CEFR) to determine our student's English level. There are six levels, ranging from A1 (Elementary) to C2 (Proficiency) and we offer an additional beginner level for students who have never studied English before.

The hours per level have been devised as per the Cambridge English guidelines, in terms of recommended guided learning hours. Each level at ES Dubai consists of 180 lessons of 45min each, plus self-study recommended time of an additional 45 hours over the course of 12 weeks if studying semi-intensively and 6 weeks if following the intensive programme.

IELTS 6 - 7 CEFR C1	Academic English The student is able to analyse and interpret subject specific texts and synthesize complex information. The student has acquired greater autonomy and has developed critical thinking, as well as building key academic vocabulary.	Level duration: 6 weeks
IELTS 5 - 6 CEFR B2	Upper-intermediate The student is able to understand the main ideas of complex text on both concrete and abstract topics, including technical discussions in his/her field of specialization. The student will also be able to produce clear, detailed text on a wide range of subjects and explain a viewpoint on a topical issue giving the advantages and disadvantages of various options.	Level duration: 6 weeks
IELTS 4 - 5 CEFR B1	Intermediate The student is able to understand the main points of clear standard input on familiar matters regularly encountered in work, school and leisure, as well as produce simple connected text on topics which are familiar or of personal interest. The student can also describe experiences and events and briefly give reasons and explanations for opinions and plans.	Level duration: 6 weeks
IELTS 3 - 4 CEFR A2	Pre-intermediate The student can understand sentences and frequently used expressions related to areas of most immediate relevance (e.g. very basic personal and family information, shopping, local geography, employment). The student can also describe in simple terms aspects of his/her background, immediate environment and matters in areas of immediate need.	Level duration: 6 weeks
IELTS 2 - 3 CEFR A1	Elementary The student understands and uses familiar everyday expressions and very basic phrases aimed at the satisfaction of needs of a concrete type, as well as being able to introduce him/herself and others and ask and answer questions about personal details such as where he/she lives, people he/she knows and things he/she has.	Level duration: 6 weeks

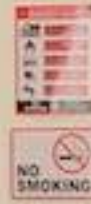
Based on intensive English classes of 30 lessons per week

es

es

Dubai

Visa &
enrolment





Easy process visa

Processing time: only 1 to 2 weeks



Student Visas

If you are an international, non-resident student, ES Dubai can provide you with a sponsored student visa, enabling you to study and reside in the UAE. The ES Dubai sponsored visas are valid for a period of up to 6 months, and are only available for students who enroll in a full-time basis in courses longer than 12 weeks. For students studying programs of less than 12 weeks, the school will help with the application for a short-term visit visa.



Visa process

The visa application process starts once you have booked and paid for your study program. To apply for visa sponsorship, you will need to submit a completed visa application form to our Admissions Officer, alongside the required supporting documents. Visa Length: 3 months, renewable once at the school, for the same length, for a total of 180 days.



Requirements to apply

1. Completed application form
2. High-resolution passport copy (passport should have a validity of 6 months when applying for a Student Visa).
3. High-resolution passport photo.
4. Copy of visa fees receipt confirming payment Enrolment visa

es



Accommodation

A vibrant rooftop pool area at Uninest Residences. The pool is surrounded by a wooden deck. In the background, there is a large, colorful graffiti wall with the words 'UNINEST', 'REFRESH', 'RELAX', and 'ON MIND'. Several orange lounge chairs are arranged on the deck. The sky is blue with white clouds. A red banner with the letters 'es' is in the top left corner.

es

Uninest Residences

Uninest is an independent student accommodation company, offering secure and flexible residences for students studying in Dubai.

The residences are designed to enhance student's study experience, with a focus on comfortable living, the study environment, and social spaces. The residence offers a free shuttle - bus service to ES Dubai every day.

Accommodation facilities

Some reasons to choose us!



Every room comes equipped with an air conditioning unit, controlled independently by you.



High-speed internet (WiFi) is available in all common areas of the building.



During your stay at Uninest Student Residences, all utility bills including internet are included in your rent- There are no hidden extras charges.



All apartments have a shared kitchen. These include a cooker and hob, fridge/freezer, microwave, kitchen table, chairs and storage space for personal/food items.



Every room comes equipped with an air conditioning unit, controlled independently by you.



Safety of our students is a priority. A personal access card is provided to each resident to ensure only residents enter the building.



A fully furnished gym is open all day and available for students to use.



A pool with a trained Lifeguard present is open during daylight hours.



A quiet yet sociable group study area is available for students to use. Perfect to complete group assignments in. When others aren't studying this can be used as a social space too.



An open space for students to relax, unwind and take in the views towards the city.



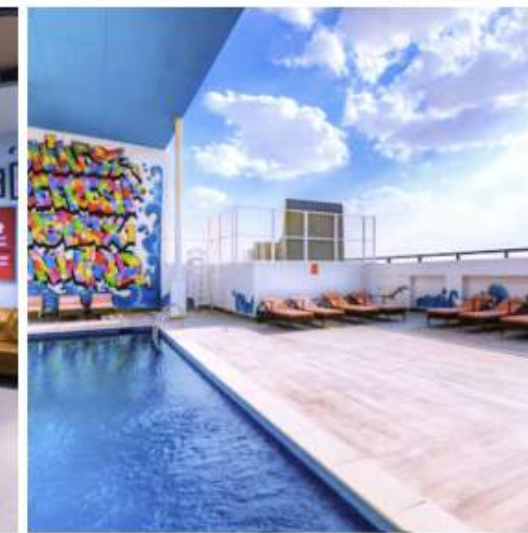
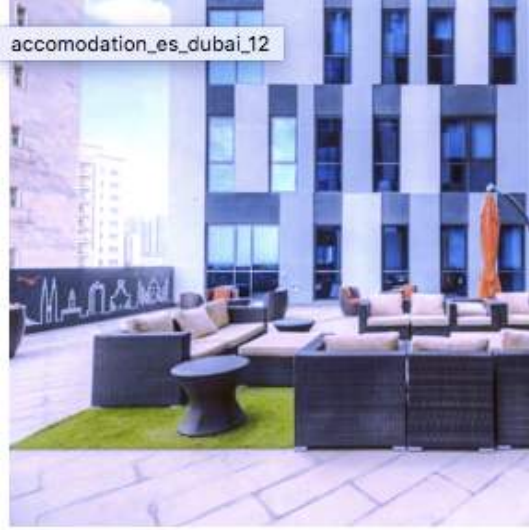
We have a 24-7 onsite property maintenance team so that if anything goes wrong in our building, we can fix it quickly and efficiently. This is free of charge.



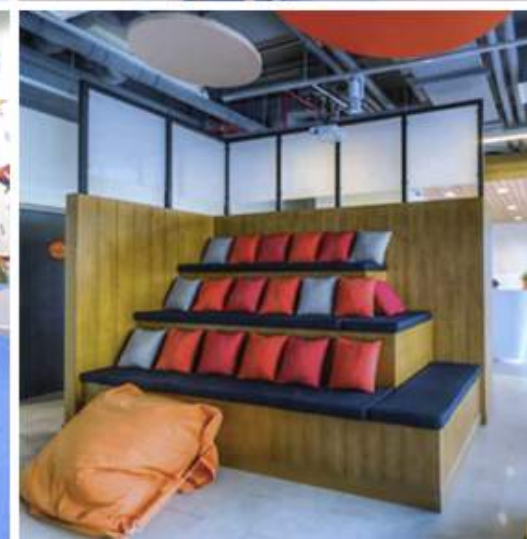
Our friendly Customer Support Service Team is available onsite 24 hours a day. Dedicated to helping and support is available to you at all times!



accommodation_es_dubai_12



Uninest is the first student accommodation in Dubai offering secure, flexible and high quality furnished apartments for rent.



es



Social programme

es

Some of the activities *you can enjoy!*

Although our primary concern is providing world-class education, we want to ensure that our students make the most of the time spent with us at ES Dubai. We offer a wide range of social activities, solely for our students. We hope that in doing so we are able to provide our students with an opportunity to experience something new in Dubai, and a chance to meet other students.



Desert Safari

Students will be picked up at school by bus and will be taken to the desert where they will experience dune bashing on a 4x4. They will also enjoy a camel ride and an evening of music and traditional food.



Ferrari World

Students will spend the day in Ferrari World just outside Abu Dhabi, and discover the world's largest theme park dedicated to the famous motoring marque.



Louvre Museum

Join us for a cultural afternoon in this beautiful museum!



Dubai Sightseeing

Discover Dubai's famous landmarks and attractions and be amazed by some of the world's most iconic locations.



Old town

Walk through the streets of the old town and discover the beautiful textile souk!



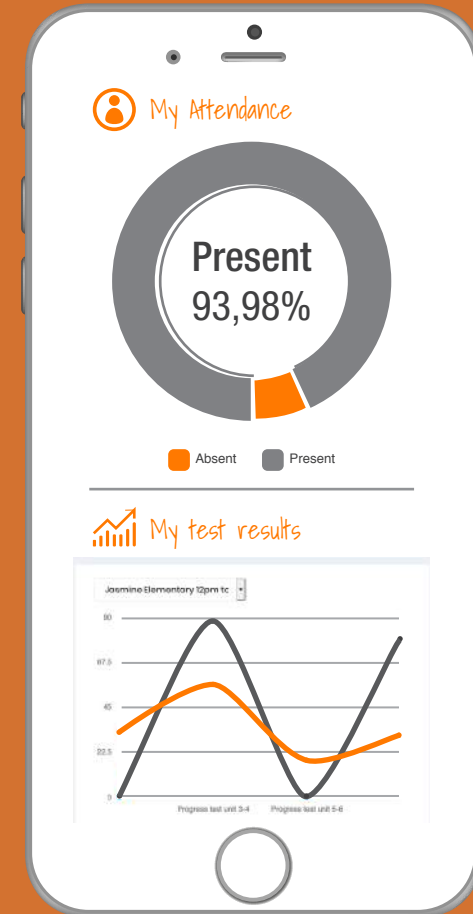
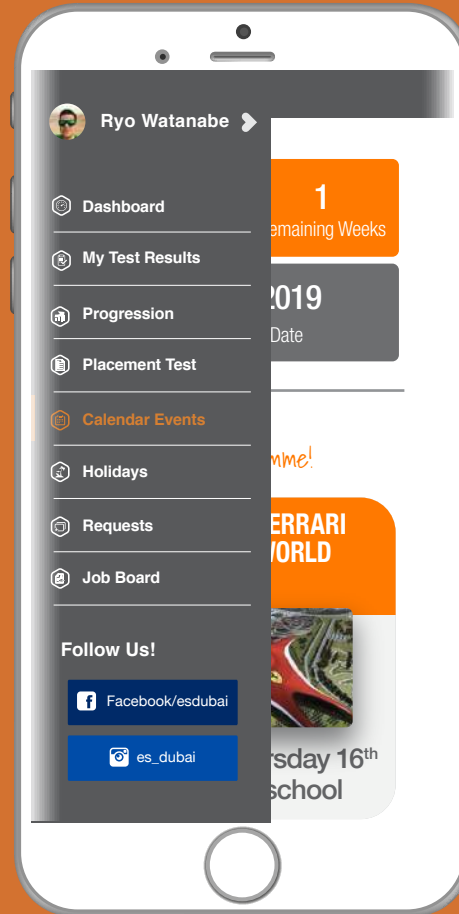
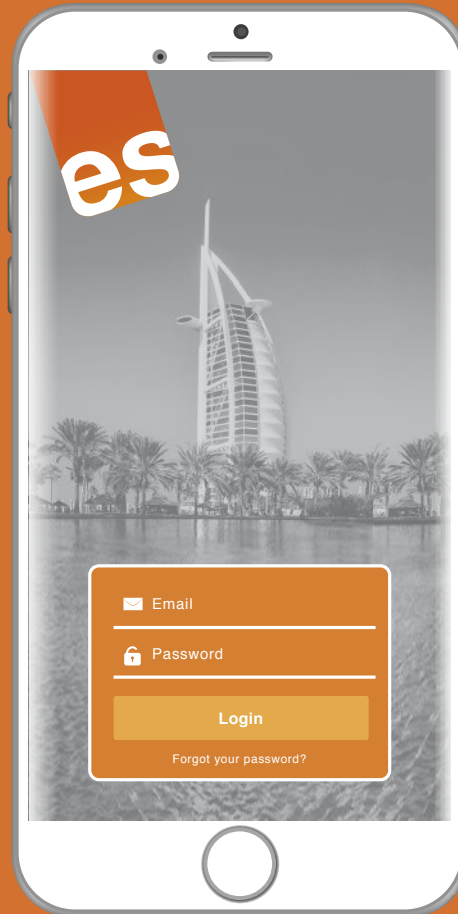
Yacht Party

Cruise along the Dubai coastline aboard a 50ft luxury yacht!

es

App ES Dubai

ES has technology!





Contact our team!

Our agents will help you throughout the process to start a new adventure

BB1, 1506/1507 Mazaya Business Avenue JLT, Dubai, UAE

+971 55 526 5321 - marketing@esdubai.com

www.esdubai.com

Follow us:



@es_dubai



/esdubai